

Introducing the  
**SPECTROLINE**<sup>®</sup>  
**TRITAN**<sup>™</sup> **365**  
(Patent Pending)

**A Powerful,  
New, Multi-LED,  
Broad-Beam UV-A  
Inspection Lamp!**

The **TRITAN**<sup>™</sup> **365** features three ultra-hi-flux UV-A LEDs for inspection, plus a convenient white light LED to illuminate dark work areas. The lamp's broad-beam configuration provides an extremely wide coverage area, while its compact head allows access into areas inaccessible to larger UV inspection lamps.

The **TRITAN**<sup>™</sup> **365** is ideal for nondestructive testing (NDT), quality control, fluorescent leak detection, industrial inspection, UV-A curing and many other applications. Meets MIL and ASTM intensity specs for FPI and MPI.



**Features :**

- Ultra-high UV-A intensity up to 20,000  $\mu\text{W}/\text{cm}^2$
- Large 4 inch (10 cm) diameter coverage area at 15 inches (38 cm), with a minimum UV-A intensity of 2,000  $\mu\text{W}/\text{cm}^2$
- Instant-on operation allows lamp to reach full intensity immediately!
- Grip-mounted, three-way rocker switch (white light/off/UV) for easy control of light sources
- Rubber bumper with Borofloat<sup>®</sup> glass lens protects LEDs from damage
- Rugged, light weight, angled lamp body provides safe, fatigue-free handling
- Built-in fan keeps LEDs cool to maintain optimum light output during extended use
- Long 8 foot (2.4 m) power cord with AC plug. Available in 120V, 230V, 240V and 100V models.
- Includes UV-absorbing spectacles



**Also available:**

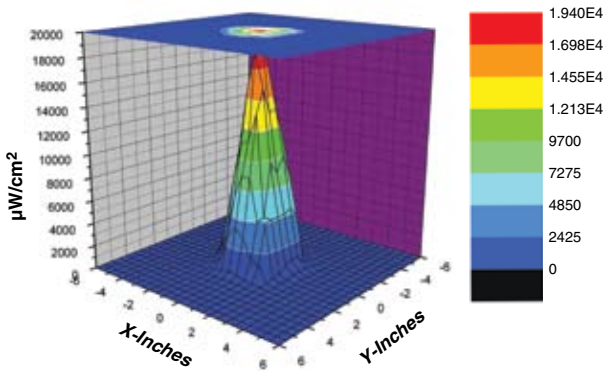
**TRITAN**<sup>™</sup> **365M** portable, battery-operated AC/DC lamp kit. Includes TRITAN 365M UV lamp, rechargeable NiMH battery pack with adjustable shoulder strap and belt loop, AC cord set, smart AC charger and padded carrying case. AC charger available in 120V, 230V, 240V and 100V versions.

# TRITAN™ 365

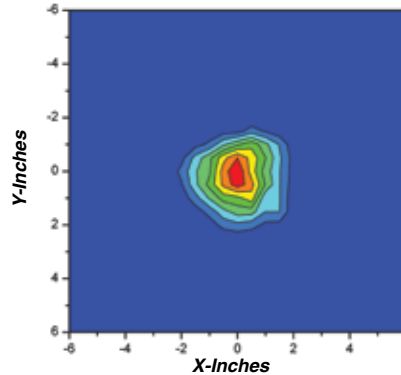
(Patent Pending)

**A Versatile, High-Intensity, Multi-LED, Broad-Beam UV-A Inspection Lamp**

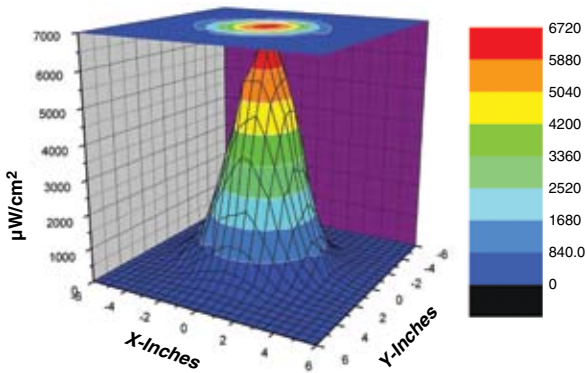
The TRITAN™ 365 is a true multi-purpose UV inspection lamp, with three powerful ultra-hi-flux UV-A LEDs for component inspection, plus a white light LED for illumination of dark work spaces. Its compact head, ergonomic body design and broad-beam configuration make it the perfect lamp to meet countless inspection requirements! Available in both an AC version (TRI-365) and an AC/DC battery-operated version (TRI-365M).



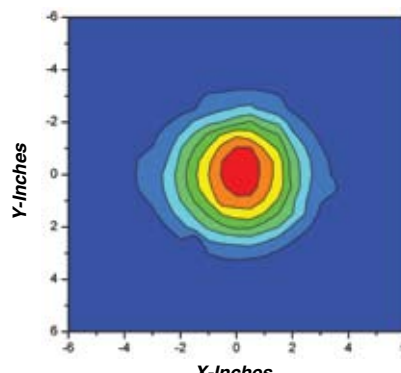
SURFACE CONTOUR PROFILE AT 6 IN (15 CM)



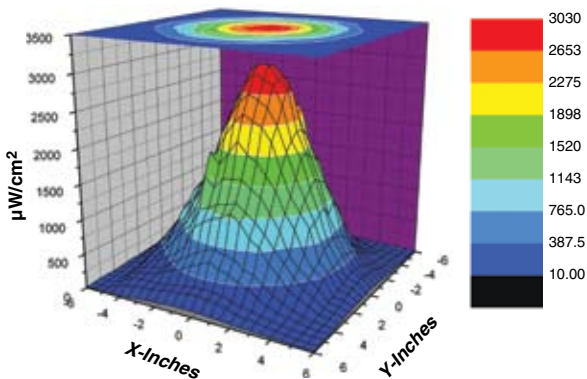
TOP INTENSITY PROFILE AT 6 IN (15 CM)



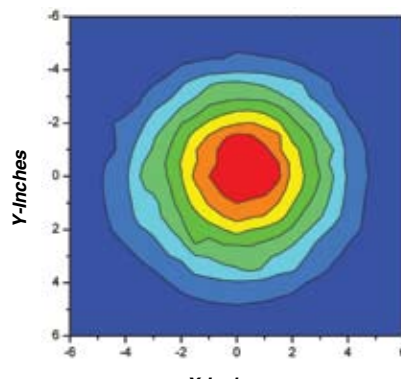
SURFACE CONTOUR PROFILE AT 15 IN (38 CM)



TOP INTENSITY PROFILE AT 15 IN (38 CM)



SURFACE CONTOUR PROFILE AT 24 IN (61 CM)



TOP INTENSITY PROFILE AT 24 IN (61 CM)

## SPECIFICATIONS

### Product Numbers

TRI-365, TRI-365M

### Lamp Head Diameter

3.25 in (8.25 cm)

### Length

8.0 in (20.3 cm)

### Weight

1 lb (454 g)

### Light Sources

3 UV LEDs, 1 white light LED

### Power Requirements

- TRI-365: 120VAC\*
- TRI-365M: 120VAC\*/12VDC

### Battery Pack (TRI-365M)

- Type: 12V, rechargeable NiMH
- Run time: 2 hours
- Charge time: 4.5 hours
- Weight: 1.5 lb (0.7 kg)

### Nominal Steady-State

#### UV-A (365 nm) Intensity:

- 6" (15 cm)—20,000  $\mu\text{W}/\text{cm}^2$
- 15" (38 cm)—5,500  $\mu\text{W}/\text{cm}^2$
- 24" (61 cm)—3,000  $\mu\text{W}/\text{cm}^2$

\* Also available in 230V, 240V and 100V versions



**Note:** All readings taken with a Spectroline® AccuMAX™ Series meter.



## SPECTRONICS CORPORATION

956 Brush Hollow Road, P.O. Box 483  
Westbury, New York 11590  
800-274-8888 • 516-333-4840  
Fax: 800-491-6868 • 516-333-4859  
[www.spectroline.com](http://www.spectroline.com)

DISTRIBUTED BY: